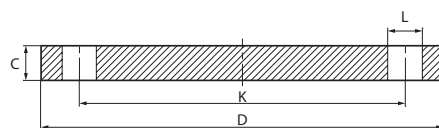
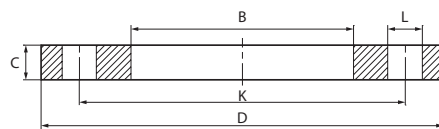


## PN 6

Artikl; Item: **FLA (EN 1092-1/01)** - Artikl; Item: **FLAC (EN 1092-1/05)**

| DN  | D promjer u inčima<br>Inch diameter | Ø ISO | D   | K   | C  | L  | Broj rupa<br>Number of holes n° | Vijak Bolt | B ISO |
|-----|-------------------------------------|-------|-----|-----|----|----|---------------------------------|------------|-------|
| 10  | 3/8"                                | 17,2  | 75  | 50  | 12 | 11 | 4                               | M10        | 18    |
| 15  | 1/2"                                | 21,3  | 80  | 55  | 12 | 11 | 4                               | M10        | 22    |
| 20  | 3/4"                                | 26,9  | 90  | 65  | 14 | 11 | 4                               | M10        | 27,5  |
| 25  | 1"                                  | 33,7  | 100 | 75  | 14 | 11 | 4                               | M10        | 34,5  |
| 32  | 1 1/4"                              | 42,4  | 120 | 90  | 16 | 14 | 4                               | M12        | 43,5  |
| 40  | 1 1/2"                              | 48,3  | 130 | 100 | 16 | 14 | 4                               | M12        | 49,5  |
| 50  | 2"                                  | 60,3  | 140 | 110 | 16 | 14 | 4                               | M12        | 61,5  |
| 65  | 2 1/2"                              | 76,1  | 160 | 130 | 16 | 14 | 4                               | M12        | 77,5  |
| 80  | 3"                                  | 88,9  | 190 | 150 | 18 | 18 | 4                               | M16        | 90,5  |
| 100 | 4"                                  | 114,3 | 210 | 170 | 18 | 18 | 4                               | M16        | 116   |
| 125 | 5"                                  | 139,7 | 240 | 200 | 20 | 18 | 8                               | M16        | 141,5 |
| 150 | 6"                                  | 168,3 | 265 | 225 | 20 | 18 | 8                               | M16        | 170,5 |
| 200 | 8"                                  | 219,1 | 320 | 280 | 22 | 18 | 8                               | M16        | 221,5 |
| 250 | 10"                                 | 273,0 | 375 | 335 | 24 | 18 | 12                              | M16        | 276,5 |
| 300 | 12"                                 | 323,9 | 440 | 395 | 24 | 22 | 12                              | M20        | 327,5 |
| 350 | 14"                                 | 355,6 | 490 | 445 | 26 | 22 | 12                              | M20        | 359,5 |
| 400 | 16"                                 | 406,4 | 540 | 495 | 28 | 22 | 16                              | M20        | 411   |
| 450 | 18"                                 | 457,0 | 595 | 550 | 30 | 22 | 16                              | M20        | 462   |
| 500 | 20"                                 | 508,0 | 645 | 600 | 30 | 22 | 20                              | M20        | 513,5 |
| 600 | 24"                                 | 610,0 | 755 | 705 | 32 | 25 | 20                              | M24        | 616,5 |

Na zahtjev radimo i specijalne prirubnice s različitim dimenzijama.  
Upon request we produce special flanges with different kind of dimensions.



## PN 10

Artikl; Item: **FLA (EN 1092-1/01)** - Artikl; Item: **FLAC (EN 1092-1/05)**

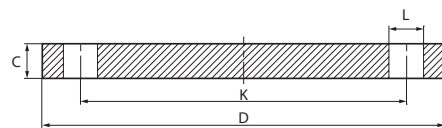
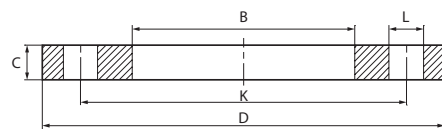
| DN     | D promjer u inčima<br>Inch diameter | Ø ISO | D   | K   | C  | L  | Broj rupa<br>Number of holes n° | Vijak Bolt | B ISO |
|--------|-------------------------------------|-------|---|-----|----|----|---------------------------------|------------|-------|
| 10-40  |                                     |       | Prema standardu EN 1092-1/01 tip PN 40; According to standard EN 1092-1/01 type PN 40 |     |    |    |                                 |            |       |
| 50-150 |                                     |       | Prema standardu EN 1092-1/01 tip PN 16; According to standard EN 1092-1/01 type PN 16 |     |    |    |                                 |            |       |
| 200    | 8"                                  | 219,1 | 340   | 295 | 24 | 22 | 8                               | M20        | 221,5 |
| 250    | 10"                                 | 273,0 | 395   | 350 | 26 | 22 | 12                              | M20        | 276,5 |
| 300    | 12"                                 | 323,9 | 445   | 400 | 26 | 22 | 12                              | M20        | 327,5 |
| 350    | 14"                                 | 355,6 | 505   | 460 | 28 | 22 | 16                              | M20        | 359,5 |
| 400    | 16"                                 | 406,4 | 565   | 515 | 32 | 26 | 16                              | M24        | 411   |
| 450    | 18"                                 | 457,0 | 615   | 565 | 36 | 26 | 20                              | M24        | 462   |
| 500    | 20"                                 | 508,0 | 670   | 620 | 38 | 26 | 20                              | M24        | 513,5 |
| 600    | 24"                                 | 610,0 | 780   | 725 | 42 | 30 | 20                              | M27        | 616,5 |

## PN 16

Artikl; Item: **FLA (EN 1092-1/01)** - Artikl; Item: **FLAC (EN 1092-1/05)**

| DN    | D promjer u inčima<br>Inch diameter | Ø ISO | D   | K   | C  | L  | Broj rupa<br>Number of holes n° | Vijak Bolt | B ISO |
|-------|-------------------------------------|-------|---|-----|----|----|---------------------------------|------------|-------|
| 10-40 |                                     |       | Prema standardu EN 1092-1/01 tip PN 40; According to standard EN 1092-1/01 type PN 40 |     |    |    |                                 |            |       |
| 50    | 2"                                  | 60,3  | 165   | 125 | 19 | 18 | 4                               | M16        | 61,5  |
| 65    | 2 1/2"                              | 76,1  | 185   | 145 | 20 | 18 | 8                               | M16        | 77,5  |
| 80    | 3"                                  | 88,9  | 200   | 160 | 20 | 18 | 8                               | M16        | 90,5  |
| 100   | 4"                                  | 114,3 | 220   | 180 | 22 | 18 | 8                               | M16        | 116   |
| 125   | 5"                                  | 139,7 | 250   | 210 | 22 | 18 | 8                               | M16        | 141,5 |
| 150   | 6"                                  | 168,3 | 285   | 240 | 24 | 22 | 8                               | M20        | 170,5 |
| 200   | 8"                                  | 219,1 | 340   | 295 | 26 | 22 | 12                              | M20        | 221,5 |
| 250   | 10"                                 | 273,0 | 405   | 355 | 29 | 26 | 12                              | M24        | 276,5 |
| 300   | 12"                                 | 323,9 | 460   | 410 | 32 | 26 | 12                              | M24        | 327,5 |
| 350   | 14"                                 | 355,6 | 520   | 470 | 35 | 26 | 16                              | M24        | 359,5 |
| 400   | 16"                                 | 406,4 | 580   | 525 | 38 | 30 | 16                              | M27        | 411   |
| 450   | 18"                                 | 457,0 | 640   | 585 | 42 | 30 | 20                              | M27        | 462   |
| 500   | 20"                                 | 508,0 | 715   | 650 | 46 | 33 | 20                              | M30        | 513,5 |
| 600   | 24"                                 | 610,0 | 840   | 770 | 52 | 36 | 20                              | M33        | 616,5 |

Na zahtjev radimo i specijalne prirubnice s različitim dimenzijama. Upon request we produce special flanges with different kind of dimensions.

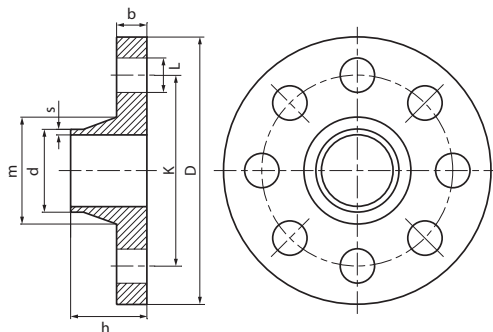


## PN 40

Artikl; Item: **FLA (EN 1092-1/01)** - Artikl; Item: **FLAC (EN 1092-1/05)**

| DN  | D promjer u inčima<br>Inch diameter | Ø ISO | D   | K   | C  | L  | Broj rupa<br>Number of holes n° | Vijak Bolt | B ISO |
|-----|-------------------------------------|-------|-----|-----|----|----|---------------------------------|------------|-------|
| 10  | 3/8"                                | 17,2  | 90  | 60  | 14 | 14 | 4                               | M12        | 18    |
| 15  | 1/2"                                | 21,3  | 95  | 65  | 14 | 14 | 4                               | M12        | 22    |
| 20  | 3/4"                                | 26,9  | 105 | 75  | 16 | 14 | 4                               | M12        | 27,5  |
| 25  | 1"                                  | 33,7  | 115 | 85  | 16 | 14 | 4                               | M12        | 34,5  |
| 32  | 1 1/4"                              | 42,4  | 140 | 100 | 18 | 18 | 4                               | M16        | 43,5  |
| 40  | 1 1/2"                              | 48,3  | 150 | 110 | 18 | 18 | 4                               | M16        | 49,5  |
| 50  | 2"                                  | 60,3  | 165 | 125 | 20 | 18 | 4                               | M16        | 61,5  |
| 65  | 2 1/2"                              | 76,1  | 185 | 145 | 22 | 18 | 8                               | M16        | 77,5  |
| 80  | 3"                                  | 88,9  | 200 | 160 | 24 | 18 | 8                               | M16        | 90,5  |
| 100 | 4"                                  | 114,3 | 235 | 190 | 26 | 22 | 8                               | M20        | 116   |
| 125 | 5"                                  | 139,7 | 270 | 220 | 28 | 26 | 8                               | M24        | 141,5 |
| 150 | 6"                                  | 168,3 | 300 | 250 | 30 | 26 | 8                               | M24        | 170,5 |
| 200 | 8"                                  | 219,1 | 375 | 320 | 36 | 30 | 12                              | M27        | 221,5 |
| 250 | 10"                                 | 273,0 | 450 | 385 | 42 | 33 | 12                              | M30        | 276,5 |
| 300 | 12"                                 | 323,9 | 515 | 450 | 48 | 33 | 16                              | M30        | 327,5 |
| 350 | 14"                                 | 355,6 | 580 | 510 | 54 | 36 | 16                              | M33        | 359,5 |
| 400 | 16"                                 | 406,4 | 660 | 585 | 60 | 39 | 16                              | M36        | 411   |
| 450 | 18"                                 | 457,0 | 685 | 610 | 66 | 39 | 20                              | M36        | 462   |
| 500 | 20"                                 | 508,0 | 755 | 670 | 72 | 42 | 20                              | M39        | 513,5 |
| 600 | 24"                                 | 610,0 | 890 | 795 | 84 | 48 | 20                              | M45        | 616,5 |

Na zahtjev radimo i specijalne prirubnice s različitim dimenzijama.  
Upon request we produce special flanges with different kind of dimensions.

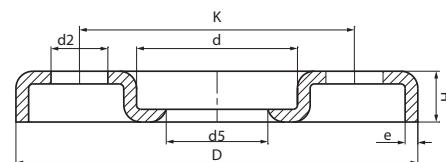


## PN 16

Artikl; Item: **FLACO (EN 1092-1/11)**

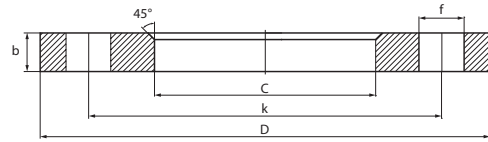
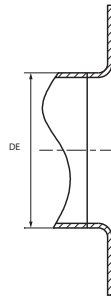
| DN   | D promjer<br>u inčima<br>Inch<br>diameter | D    | h   | b  | Otvor ; Opening |    |                                    | Grlo; Nec |       |     | Težina<br>Weight<br>circa<br>Kg |
|------|---|------|-----|----|-----------------|----|------------------------------------|-----------|-------|-----|---------------------------------|
|      |   |      |     |    | K               | L  | Broj rupa<br>Number of<br>holes n° | m         | d     | s   |                                 |
| 15   | 1/2"                                      | 95   | 35  | 14 | 65              | 14 | 4                                  | 32        | 22,5  | 2,5 | 0,800                           |
| 20   | 3/4"                                      | 105  | 38  | 16 | 75              | 14 | 4                                  | 40        | 28    | 2,5 | 1,100                           |
| 25   | 1"  | 115  | 38  | 16 | 85              | 14 | 4                                  | 45        | 34,5  | 2,8 | 1,300                           |
| 32   | 1¼"                                       | 140  | 40  | 16 | 100             | 18 | 4                                  | 56        | 43,5  | 3   | 1,900                           |
| 40   | 1½"                                       | 150  | 42  | 16 | 110             | 18 | 4                                  | 64        | 42,5  | 3   | 2,200                           |
| 50   | 2"  | 165  | 45  | 18 | 125             | 18 | 4                                  | 75        | 61,5  | 3,5 | 2,900                           |
| 65   | 2½"                                       | 185  | 45  | 18 | 145             | 18 | 4                                  | 90        | 77    | 3,5 | 3,400                           |
| 80   | 3"  | 200  | 50  | 20 | 160             | 18 | 8                                  | 105       | 90    | 3,7 | 4,400                           |
| 100  | 4"  | 220  | 52  | 20 | 180             | 18 | 8                                  | 131       | 115,5 | 3,7 | 5,100                           |
| 125  | 5"  | 250  | 55  | 22 | 210             | 18 | 8                                  | 156       | 141   | 4   | 6,800                           |
| 150  | 6"  | 285  | 55  | 22 | 240             | 22 | 8                                  | 184       | 170,5 | 5   | 8,400                           |
| 175  | 7"  | 315  | 60  | 24 | 270             | 22 | 8                                  | 210       | 195,5 | 5   | 10,600                          |
| 200  | 8"  | 340  | 62  | 24 | 295             | 22 | 12                                 | 235       | 221   | 5   | 11,600                          |
| 250  | 10"                                       | 405  | 70  | 26 | 355             | 25 | 12                                 | 292       | 275   | 5,5 | 17, -                           |
| 300  | 12"                                       | 460  | 78  | 28 | 410             | 25 | 12                                 | 344       | 326   | 6   | 22, -                           |
| 350  | 14"                                       | 520  | 82  | 30 | 470             | 25 | 16                                 | 390       | 357,5 | 6,4 | 29, -                           |
| 400  | 16"                                       | 580  | 85  | 32 | 525             | 30 | 16                                 | 445       | 438,5 | 7   | 37, -                           |
| 450  | 18"                                       | 640  | 85  | 32 | 585             | 30 | 20                                 | 485       | 459   | 7,3 | 45, -                           |
| 500  | 20"                                       | 715  | 90  | 34 | 650             | 33 | 20                                 | 548       | 510   | 7,3 | 60, -                           |
| 600  | 24"                                       | 840  | 95  | 36 | 770             | 36 | 20                                 | 652       | 611,5 | 7,3 | 80, -                           |
| 700  | 28"                                       | 910  | 100 | 36 | 840             | 36 | 24                                 | 755       | 715   | 9   | 88, -                           |
| 800  | 32"                                       | 1025 | 105 | 38 | 950             | 39 | 24                                 | 855       | 817   | 9   | 110, -                          |
| 900  | 36"                                       | 1125 | 110 | 40 | 1050            | 39 | 28                                 | 955       | 918   | 10  | 130, -                          |
| 1000 | 40"                                       | 1255 | 120 | 42 | 1170            | 42 | 28                                 | 1058      | 1020  | 12  | 165, -                          |

Na zahtjev radimo i specijalne prirubnice s različitim dimenzijama.  
Upon request we produce special flanges with different kind of dimensions.

**PN 10**Artikl; Item: **FLAST (DIN 2642)**

| DN  | d1 ISO | d1 Metričke<br>Metric | D   | d   | d5  | K   | e | H    | Otvor ; Opening                       |      |      | Težina<br>Weight | 1.4307<br>304L |
|-----|--------|-----------------------|-----|-----|-----|-----|---|------|---------------------------------------|------|------|------------------|----------------|
|     |        |                       |     |     |     |     |   |      | n° Broj<br>rupa<br>Number<br>of holes | Tipo | d2   |                  |                |
| 15  | 21,3   |                       | 95  | 38  | 24  | 65  | 3 | 12,0 | 4                                     | M12  | 13,5 | 0,180            | •              |
| 20  | 26,9   |                       | 105 | 48  | 30  | 75  | 3 | 14,0 | 4                                     | M12  | 13,5 | 0,240            | •              |
| 25  | 33,7   | 28                    | 115 | 53  | 37  | 85  | 3 | 16,0 | 4                                     | M12  | 13,5 | 0,282            | •              |
| 32  | 42,4   | 35                    | 140 | 68  | 46  | 100 | 3 | 16,0 | 4                                     | M16  | 17,5 | 0,420            | •              |
| 40  | 48,3   | 43                    | 150 | 77  | 54  | 110 | 4 | 17,5 | 4                                     | M16  | 18,0 | 0,600            | •              |
| 50  | 60,3   | 54                    | 165 | 91  | 65  | 125 | 4 | 19,5 | 4                                     | M16  | 18,0 | 0,740            | •              |
| 65  | 76,1   | 70                    | 185 | 108 | 81  | 145 | 4 | 21,5 | 4                                     | M16  | 18,0 | 0,900            | •              |
| 80  | 88,9   | 84                    | 200 | 123 | 94  | 160 | 4 | 21,5 | 8                                     | M16  | 18,0 | 1,000            | •              |
| 100 | 114,3  | 104                   | 220 | 141 | 119 | 180 | 4 | 22,0 | 8                                     | M16  | 18,0 | 1,085            | •              |
| 125 | 139,7  | 129                   | 250 | 168 | 145 | 210 | 5 | 22,0 | 8                                     | M16  | 18,0 | 1,700            | •              |
| 150 | 168,3  | 154                   | 285 | 192 | 173 | 240 | 5 | 25,0 | 8                                     | M20  | 22,0 | 2,100            | •              |
| 200 | 219,1  | 204                   | 340 | 245 | 225 | 295 | 6 | 28,0 | 8                                     | M20  | 22,0 | 3,360            | •              |
| 250 | 273,0  | 254                   | 395 | 295 | 279 | 350 | 6 | 31,0 | 12                                    | M20  | 22,0 | 4,200            | •              |
| 300 | 323,9  | 306                   | 445 | 345 | 329 | 400 | 6 | 34,0 | 12                                    | M20  | 22,0 | 5,150            | •              |
| 350 | 355,6  | 356                   | 505 | 393 | 362 | 460 | 8 | 36,0 | 16                                    | M20  | 22,0 | 7,500            | •              |
| 400 | 406,4  | 406                   | 565 | 443 | 413 | 515 | 8 | 38,0 | 16                                    | M24  | 26,0 | 9,200            | •              |

- Standardne dimenzije
- Standard dimension



## PN 10

Artikl; Item: **FLAI (ISO)** - Artikl; Item: **FLA (METRIČKE; METRIC)** - Artikl; Item: **FLACIE (SLIJEPE; BLIND)**

| DN   | D    | ISO  |                                 | Metričke; Metric |                                 | Debljina<br>Thickness<br>b | Broj rupa; Number of holes |     |    |
|------|------|------|---------------------------------|------------------|---------------------------------|----------------------------|----------------------------|-----|----|
|      |      | C    | Promjer cijevi<br>Tube diameter | C                | Promjer cijevi<br>Tube diameter |                            | Ø k                        | Ø f | n° |
| 10   | 90   | 19   | 3/8"-17,2                       | 19               | 13-14                           | 12                         | 60                         | 14  | 4  |
| 15   | 95   | 24   | 1/2"-21,3                       | 24               | 18-20                           | 12                         | 65                         | 14  | 4  |
| 20   | 105  | 30   | 3/4"-26,9                       | 30               | 23-25                           | 12                         | 75                         | 14  | 4  |
| 25   | 115  | 36   | 1"-33,7                         | 34               | 28-30                           | 12                         | 85                         | 14  | 4  |
| 32   | 140  | 46   | 1 1/4"-42,2                     | 40               | 35-38                           | 16                         | 100                        | 18  | 4  |
| 40   | 150  | 54   | 1 1/2"-48,3                     | 48               | 43-44,5                         | 16                         | 110                        | 18  | 4  |
| 50   | 165  | 65   | 2"-60,3                         | 58               | 53-56                           | 16                         | 125                        | 18  | 4  |
| 65   | 185  | 81   | 2 1/2"-76,1                     | 73               | 69                              | 16                         | 145                        | 18  | 4  |
| 80   | 200  | 94   | 3"- 88,9                        | 90               | 84-86                           | 18                         | 160                        | 18  | 8  |
| 100  | 220  | 119  | 4"-114,3                        | 110              | 104-106                         | 18                         | 180                        | 18  | 8  |
| 125  | 250  | 144  | 5"-139,7                        | 135              | 129-131                         | 18                         | 210                        | 18  | 8  |
| 150  | 285  | 173  | 6"-168,3                        | 160              | 154-156                         | 18                         | 240                        | 22  | 8  |
| 200  | 340  | 225  | 8"-219,1                        | 212              | 204- 206                        | 20                         | 295                        | 22  | 8  |
| 250  | 395  | 279  | 10"-273,0                       | 262              | 254-256                         | 22                         | 350                        | 22  | 12 |
| 300  | 445  | 329  | 12"- 323,9                      | 312              | 304-306                         | 22                         | 400                        | 22  | 12 |
| 350  | 505  | 362  | 14"-355,6                       | 362              | 356                             | 22                         | 460                        | 22  | 16 |
| 400  | 565  | 413  | 16"-406,4                       | 413              | 406                             | 25                         | 515                        | 25  | 16 |
| 450  | 615  | 466  | 18"-456,0                       | 466              | 456                             | 25                         | 565                        | 25  | 20 |
| 500  | 670  | 517  | 20"-508,0                       | 517              | 506                             | 28                         | 620                        | 25  | 20 |
| 600  | 780  | 620  | 24"- 610,0                      | 620              | 606                             | 30                         | 725                        | 30  | 20 |
| 700  | 895  | 721  | 28"-711,0                       | 721              | 706                             | 32                         | 840                        | 30  | 24 |
| 800  | 1015 | 824  | 32"-813,0                       | 824              | 806                             | 36                         | 950                        | 33  | 24 |
| 900  | 1115 | 920  | 36"-914,4                       | 920              | 906                             | 36                         | 1050                       | 33  | 28 |
| 1000 | 1230 | 1020 | 40"-1016                        | 1020             | 1006                            | 36                         | 1160                       | 33  | 28 |